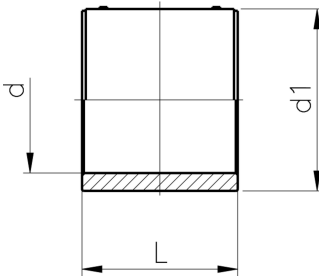




Coupler

- PE 100 SDR 17 (ISO S8)
- 5 bar Gas / 10 bar Water
- 4 mm pin connectors
- Limited path fusion indicators
- With active reinforcement



d (mm)	Code	Weight (kg)	d1 (mm)	L (mm)
355	753 911 804	9.522	416	291
400	753 911 805	18.000	467	295
450	753 911 806	16.000	526	327
500	753 911 807	22.000	584	358
560	753 911 808	34.000	647	396
630	753 911 809	35.000	727	440
710	753 911 810	55.600	820	463
800	753 911 811	73.000	922	484

The technical data are not binding. They neither constitute expressly warranted characteristics nor guaranteed properties nor a guaranteed durability. They are subject to modification. Our General Terms of Sale apply.

Georg Fischer Piping Systems Ltd, Postfach, CH-8201 Schaffhausen/Switzerland

Phone +41 -(0)52-631 1111

e-mail: info.ps@georgfischer.com

Internet: <http://www.gfps.com>