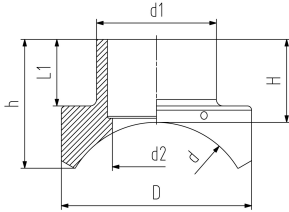


Branch saddle topload outlet 315 mm

- PE 100 SDR 11 (ISO S5)
- 10 bar Gas / 16 bar Water
- Branch saddle installation only with installation set Topload TL315 (799.350.808) or TL500 (799.300.809)
- Angle adaptors (799.350.340) for fusion cable required
- 4 mm pin connectors
- Protected wire without medium contact
- Spigot outlet for butt- and electrofusion
- Full pressure applicable - no derating factor



d (mm)	d1 (mm)	Code	SP	GP	Weight (kg)	h (mm)	H (mm)	L (mm)	L1 (mm)	D (mm)	d2 (mm)	SDR pipe
450	315	193 135 436	1	1	18.500	216	346	500	157	500	232	11 - 26
500	315	193 135 446	1	1	17.000	216	337	500	157	500	232	11 - 26
560	315	193 135 456	1	1	16.100	216	327	500	157	500	232	11 - 26
630	315	193 135 466	1	1	15.950	216	312	500	157	500	232	11 - 33
710	315	193 135 476	1	1	14.800	216	297	500	157	500	232	11 - 33
800	315	193 135 486	1	1	14.300	216	287	500	157	500	232	11 - 33
900	315	193 135 496	1	1	13.800	216	281	500	157	500	232	11 - 33
1000	315	193 135 506	1	1	13.500	216	274	500	157	500	232	11 - 33

The technical data are not binding. They neither constitute expressly warranted characteristics nor guaranteed properties nor a guaranteed durability. They are subject to modification. Our General Terms of Sale apply.

Georg Fischer Piping Systems Ltd, Postfach, CH-8201 Schaffhausen/Switzerland

Phone +41 -(0)52-631 1111

e-mail: info.ps@georgfischer.com

Internet: <http://www.gfps.com>